

Temporary Traffic Management

Speed Limits

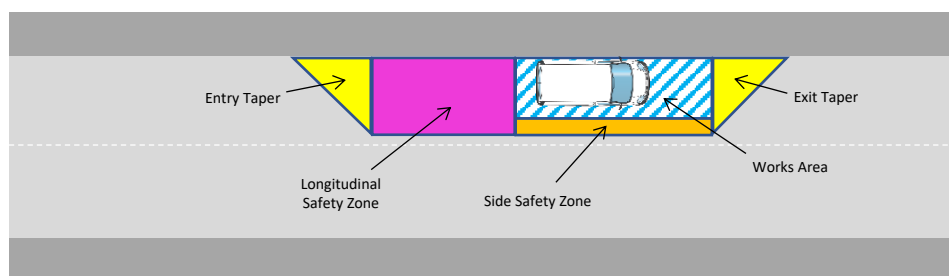
All public roads have speed limits. In most cases, a 'default' speed limit applies. This automatically applies to a particular type of road if there is no speed limit sign to show otherwise. The table below sets out the default speed limits for different roads under the Road Traffic Act 2004.

Type of Road	Speed Limit
Motorway (Blue Signs - M numbers)	120kmh
National roads (primary and secondary) (Green Signs - N numbers)	100kmh
Non-national roads (regional and local) (White Signs - R or L numbers)	80kmh
Roads in built-up areas, such as cities, towns and boroughs	50kmh
Special speed limits for roads in built up areas and densely populated areas.	30kmh

Local authorities can apply special speed limits to roads. If the local authority sets a special speed limit, you will see one of the signs:



Parts of the Site

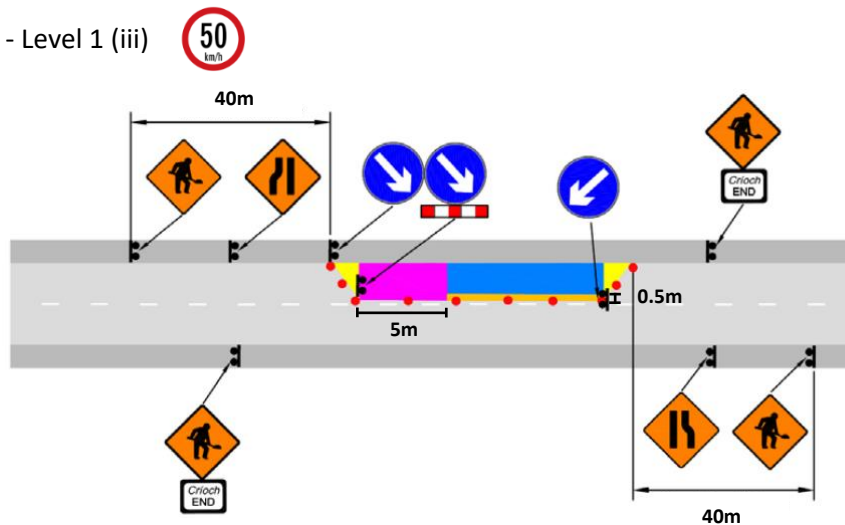


Layout Parameters

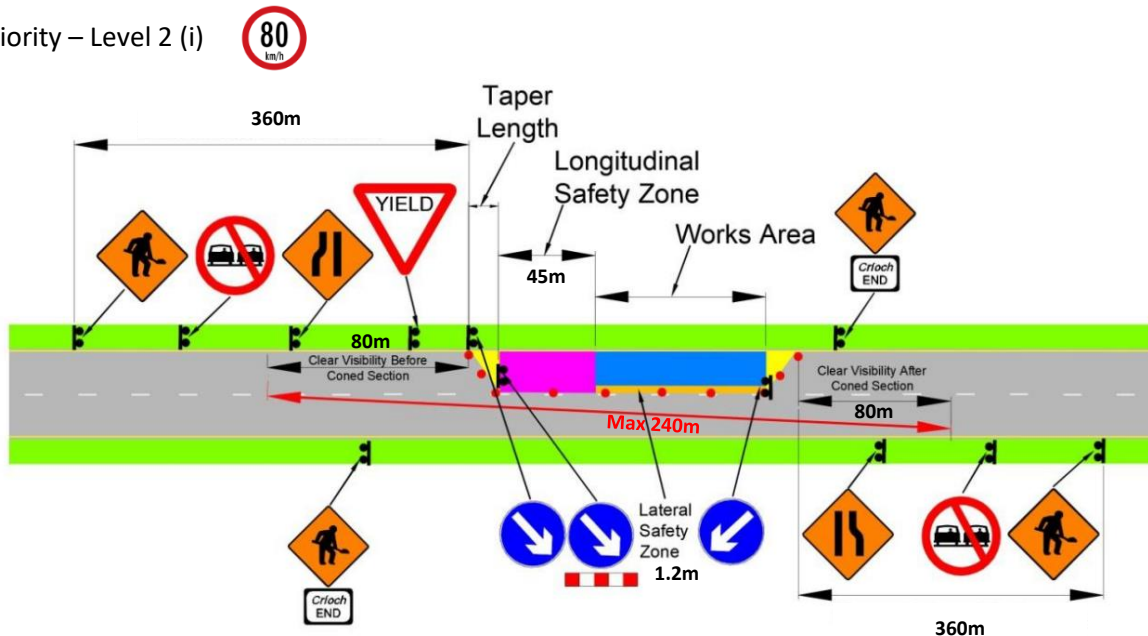
Road Level	Speed Limit	Advanced Sign Distance	Min. Number of Advanced Signs	Min Clear Visibility of Signs	Longitudinal Safety Zone	Side Safety Zone	Longitudinal Cone Space	Taper Multiply Factor	Taper Cone Spacing
1 (i)		10m	1 rwa	25m	0.5m	0.5m	3m	1	1m
1 (ii)		30m	1 rwa 1 tm	35m	0.5m	0.5m	3m	1	1m
1 (iii)		40m	1 rwa 1 tm	50m	5m	0.5m	3m	5	3m
1 (iv)		40m	1 rwa 1 tm	60m	15m	0.5m	6m	10	3m
2 (i)		360m	1 rwa 1 no 1 tm	90m	45m	1.2m	12m	40	3m
2 (ii)		600m	1 rwa 1 no 1 tm	120m	60m	1.2m	12m	60	3m

Sample Traffic Management Layouts:

Give and Take - Level 1 (iii)



Priority – Level 2 (i)



These sample traffic management layouts are for illustration purposes only. Traffic management should be in accordance with an approved temporary traffic management plan. All signing, lighting and guarding must be put in place, altered or removed under the supervision of a person holding a valid CSCS SLG card.

PERSONNAL PROTECTIVE EQUIPMENT

Standard PPE to be worn on NBI Contract.

- Hi-Viz clothing - All Site Personnel (FLMs, PICWs, Operatives etc) on the NBI contract **must** wear Hi-Viz trousers and Long Sleeved NBI Branded Vests. There are no exceptions to this.
- Safety Helmet - Must be a Climbing Helmet if Working at Height. Bump caps are not permitted.
- Safety Boots - All Site Personnel
- Gloves - Available when required

Task Specific - Certain tasks have specific hazards and task specific PPE is required, for example, using a con saw. Task specific PPE includes ear protection, eye protection, breathing protection, face protection etc.